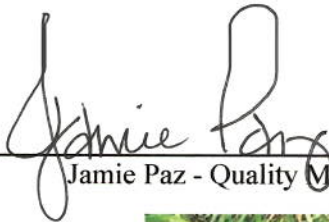


# Full Spectrum Bliss

**Product Name** "250mg Active Cannabinoid" Intimate Oil  
**Product Description** 60ml Intimate Oil; 0.5% active hemp extract infused in Coconut Oil, MCT (fractionated coconut oil), and Cacao Seed Butter  
**Lot Number** 18AB334  
**Expiration Date** October 2019  
**Date of Production (Batch Date)** November 2018  
**Batch Size:** 1250 units **Quantity Produced:** 1265units

## Raw Ingredients

Ingredient	Manufacturer	Lot Number
Coconut Oil 76	Bulk Apothecary	67515
MCT Oil	Bulk Apothecary	66075
Cacao Seed Butter	Cocoa Supply	MR0-018-002
Cetearyl Alcohol	Essential Wholesale & Labs	18OH7101BS311MM
Arginine in Water (500mg/ml)	Ecofibre Industries Operations	18AB334-Arginine
Peppermint Extract	Bulk Apothecary	66911
Black Pepper Extract	Bulk Apothecary	67970
Cannabinoids	Ecofibre Industries Operations	JHHome16-01
Phenoxyethanol	Essential Wholesale & Labs	270H7394PW

  
\_\_\_\_\_  
Jamie Paz - Quality Manager

  
\_\_\_\_\_  
Date



Ananda's 100% Kentucky grown hemp is planted, harvested, and dried using existing Kentucky tobacco infrastructure and knowledge. Kentucky farmers are now making the switch to farming Hemp with the passing of the 2018 Farm Bill and Ananda Hemp is right beside them providing superior genetics and support.

**Manufactured By:**  
Ananda Professional  
PO Box 648  
Cynthiana, KY 41031  
888-388-1119  
hello@anandaprofessional.com  
www.AnandaProfessional.com

These statements have not been evaluated by the Food and Drug Administration. This product is not intended to diagnose, treat, cure, or prevent any disease.

**Manufactured By:**  
Ananda Hemp  
PO Box 648  
Cynthiana, KY 41031  
888-388-1119  
hello@anandahemp.com  
www.AnandaHemp.com

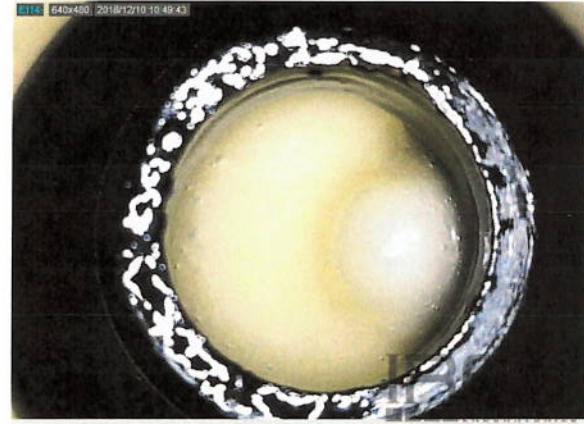
Testing Accreditation #: 77802

Test Certificate #: 113685-001

**Client Name, Sample Details**  
**Ananda**  
 Cynthiana, KY 41031  
**Sample:** 18AB334  
**Type:** Infused Product  
**Method:** FE04M HPLC1100-1

**Test Conditions**  
**Scale:** XS205-M12  
**Temp:** 21 °C  
**Baro Pressure:** 988.3 hPa  
**Analyst:** MEH  
**Technician:** JRT

**Sample ID#:** 113685  
**Process Date:** 12/10/2018  
**Serving Size (g):** 1  
**Date Received:** 12/10/2018  
**Test Date:** 12/10/2018  
**Valid Through:** 12/10/2019



Test Compounds	CBDV*	CBDA	CBD	CBC*	CBG*	CBN	THC	THCA	THCV*		Calc. Max	CBD Decarb. %	THC Decarb. %
Amount	N/D	1.5 mg/g	5.3 mg/g	0.2 mg/g	N/D	1.7 mg/g	1.9 mg/g	N/D	N/D	<b>THC</b>	1.9 mg/g	78%	100%
LOQ	0.2 mg/g	0.2 mg/g	0.2 mg/g	0.2 mg/g	0.2 mg/g	0.2 mg/g	0.2 mg/g	0.2 mg/g	0.2 mg/g	<b>CBD</b>	6.6 mg/g	-	-
Amount per Serving~	N/D	1.5 mg/srv	5.3 mg/srv	0.2 mg/srv	N/D	1.7 mg/srv	1.9 mg/srv	N/D	N/D	-	<b>Serving Size~ (g):</b>	1.00 g	-
Uncertainty	±5%RSD	±5%RSD	±5%RSD	±5%RSD	±5%RSD	±5%RSD	±5%RSD	±5%RSD	±5%RSD	-	-	-	-

1 serving = 1 g (declared)

LOQ = Limit of Quantitation; %RSD = Relative Standard Deviation; N/D = Not Detected

\*Designates compounds that are not currently included in Iron Laboratories' accredited scope.

\*\*\* Designates tests that use the method FE-45.

Calc. Max is the calculated sum of CBD or THC and the amount of CBD or THC derived from CBDA or THCA, respectively. These values are calculated by applying a molar correction factor of 0.877 to the CBDA or THCA value.

THC and CBD Decarb. % refers to the percentage of THC or CBD relative to THCA or CBDA, respectively.

This certificate shall not be reproduced except in full, without written approval of Iron Laboratories, LLC.

*Mackenzie E. Hyman*  
 Mackenzie E. Hyman, Quality Manager



*Andrea C. Ruppel*  
 Andrea C. Ruppel, Lab Manager

Iron Laboratories, LLC is an ISO/IEC 17025:2005 Testing Laboratory laboratory, accredited by (PJLA) Perry Johnson Laboratory Accreditation, Certificate No. 77802

Tested by Iron Laboratories Michigan, 1825 E. West Maple Walled Lake, MI 48390



**Client Name, Sample Details**  
**Ananda**  
 Cynthiana, KY 41031  
**Sample:** 18AB334  
**Type:** Infused Product

**Test Conditions**  
**Scale:** XS-205M11  
**Temp:** 21 °C  
**Baro Pressure:** 988.3 hPa  
**Analyst:** ACR  
**Technician:** ACR

**Sample ID#:** 113685  
**Process Date:** 12/10/2018  
**Serving Size (g):** 1  
**Date Received:** 12/10/2018  
**Test Date:** 12/10/2018  
**Valid Through:** 12/10/2019




Test	Method	MCFU (CFU/g)	LOD (CFU/g)	Status (CFU/g)
Total Aerobic	FE-37	100,000	797	Pass/<LOD
Yeast & Mold	FE-37	10,000	797	Pass/<LOD
Bile-tolerant gram-negative bacteria	FE-37	1,000	80	Pass/<LOD
Total Coliforms	FE-37	1,000	80	Pass/<LOD
E. Coli	FE-37	100	80	Pass/<LOD
Salmonella	FE-56	100	95	Pass/<LOD

Test	Method	MRL (µg/g)	LOD (µg/g)	Status (µg/g)
Total Aflatoxin (B1, B2, G1, and G2)	FE-61	0.02	0.02	Pass/<0.02µg/g

Maximum Colony Forming Units (MCFU) represents the minimum value that a test would need to achieve in order to be considered a failed result (if applicable).  
 MRL is the Maximum Residue Limit. LOD is the Limit of Detection for the method. CFU/g = Colony Forming Units per gram.  
 E. coli, Salmonella, Bile-Tolerant Gram-Negative Bacteria, Total Coliforms, and Total Aerobic Tests are not part of Iron Laboratories ISO/IEC 17025:2005 accredited scope.

Sample was sampled and tested in accordance with the Safety Compliance Facility Information published on September 28, 2018.

This certificate shall not be reproduced except in full, without written approval of Iron Laboratories, LLC.

  
 Mackenzie E. Hyman, Quality Manager



  
 Andrea C. Ruppel, Lab Manager

Tested by Iron Laboratories Michigan, 1825 E. West Maple Walled Lake, MI 48390